



FARRELL  ESTATES
WELLINGTON

A Collection of 27 Signature Custom Homes

FarrellWellington.com

“WHERE
TIMELESS
ELEGANCE
MEETS
MODERN
LUXURY”

Situated within the prestigious Palm Beach Polo and Country Club, this exclusive enclave features just 27 bespoke residences, each spanning 5,300 to 8,900+ sq ft.



MODEL 8 - 6,700+/- SQFT



MODEL 7 - 5,300+/- SQFT



MODEL 1 - 6,500+/- SQFT

Construction commenced for 2025 move-in, these residences offer a unique opportunity to immerse yourself in a lifestyle where

LUXURY IS
NOT JUST AN
EXPECTATION,
BUT A
STANDARD.



Crafted for those who seek the pinnacle of refinement, these homes are a testament to superior craftsmanship and impeccable design.

Interiors promise a harmonious blend of sophistication and comfort, ensuring every detail is meticulously curated.





MODEL 1

6,500
square foot

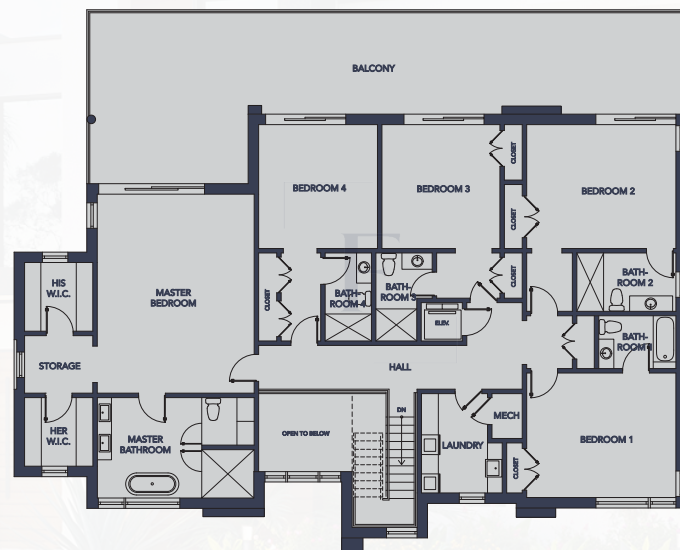
6
bedrooms

7
bathrooms

An exquisite residence curated for the discerning few. Six lavish bedroom suites and seven spa-inspired baths sit alongside dual oversized 2.5-car garages and a dedicated golf-port, creating a seamless blend of indulgence and convenience in one peerless estate.



ground floor



second floor



MODEL 2

6,500
square foot

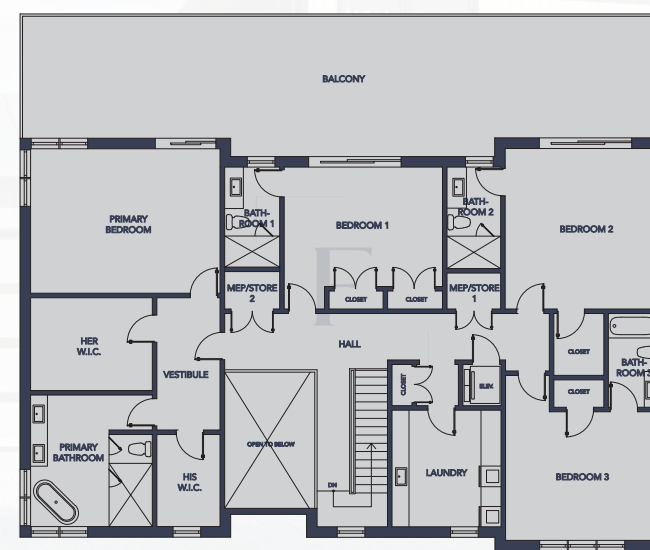
6
bedrooms

7
bathrooms

Model 2 presents an extraordinary haven for grand entertaining. Six sumptuous bedroom suites and seven baths join two refined powder rooms within 6,500 ± sq ft of flawlessly crafted living space.



ground floor



second floor



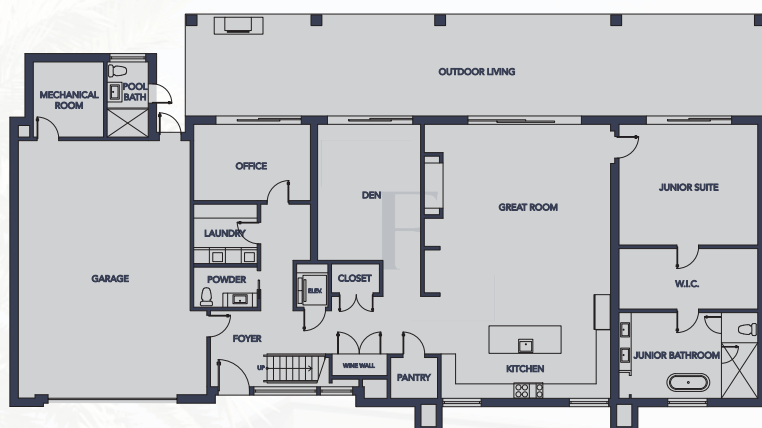
MODEL 3

7,500
square foot

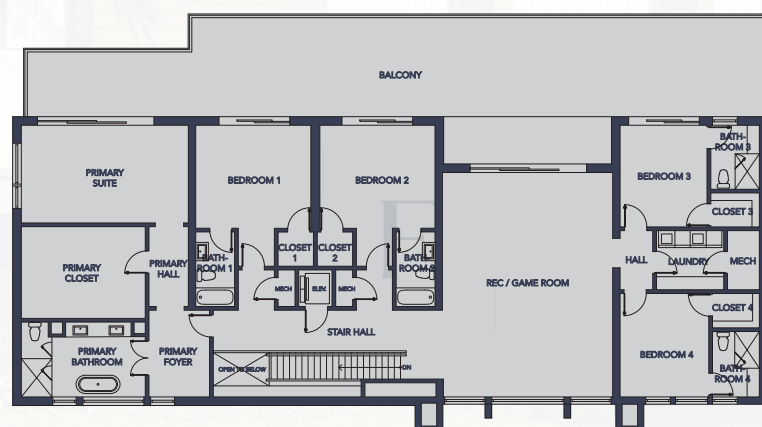
6
bedrooms

7
bathrooms

Model 3 offers 7,500 ± sq ft of gracious luxury—six indulgent bedroom suites and seven designer baths flow to an outdoor living space with pool and spa, creating a resort-calibre sanctuary.



ground floor



second floor



MODEL 4

7,200
square foot

6
bedrooms

7
bathrooms

Model 4 embodies Granoff Architects' signature finesse—six sumptuous bedroom suites, seven opulent baths, and a refined powder room, all finished to exacting standards for a life of effortless elegance.



ground floor



second floor



MODEL 5

7,500
square foot

7
bedrooms

8
bathrooms

Model 5 redefines sophistication—seven serene bedroom suites, eight designer baths, and a chic half bath converge with a dedicated golf-cart port, expansive indoor-outdoor entertaining zones, and signature Farrell craftsmanship, elevating your everyday living.



ground floor



second floor



MODEL 6

7,500
square foot

7
bedrooms

8
bathrooms

Model 6 presents seven sumptuous bedroom suites, eight designer baths, and an elegant powder room. A dedicated golf-cart port pairs with signature Farrell finishes to create an effortlessly luxe haven for refined living and entertaining.



ground floor



second floor



MODEL 7

5,300 square foot

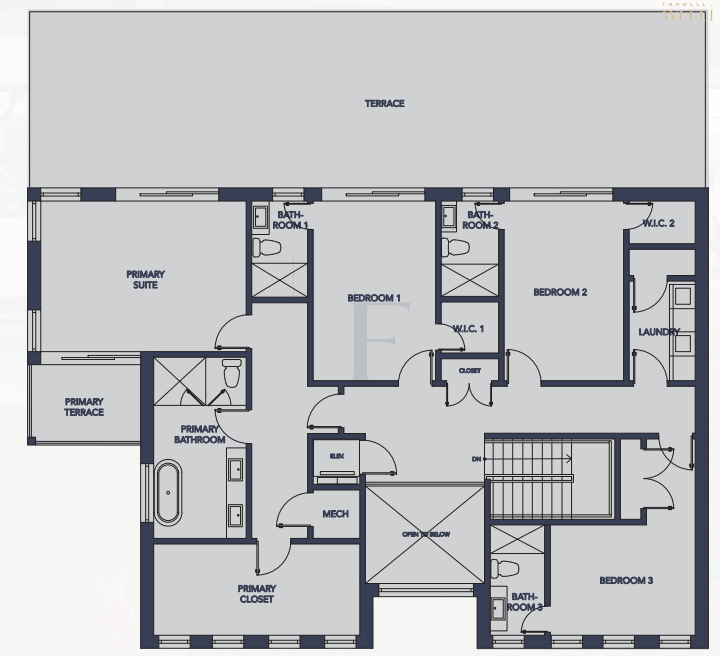
5 bedrooms

6 bathrooms

Model 7 features five sumptuous bedroom suites, six artfully appointed baths, and a dedicated golf-cart bay. Open-plan living areas, bespoke finishes, and seamless indoor-outdoor flow create a sanctuary where effortless elegance defines everyday life.



ground floor



second floor



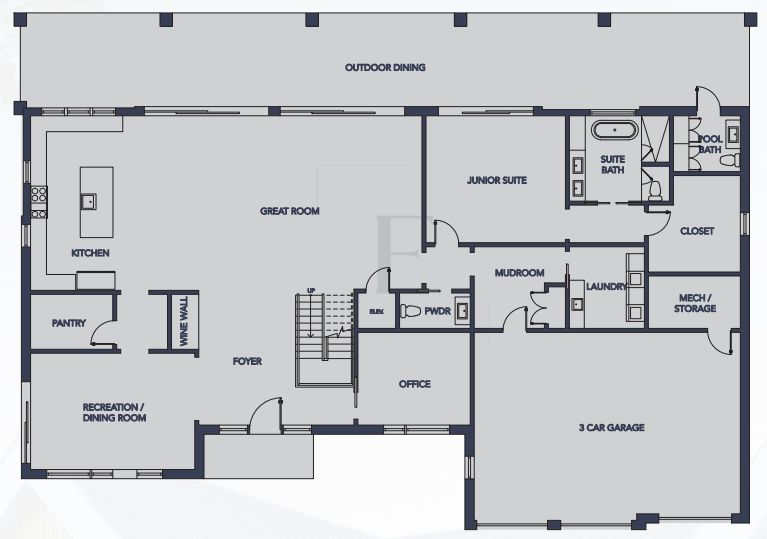
MODEL 8

6,700 square foot

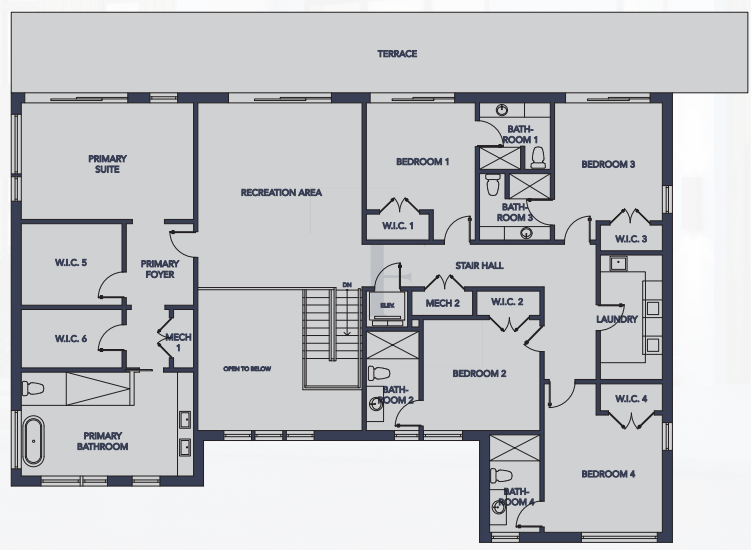
6 bedrooms

7 bathrooms

Model 8 unfolds across 6,700 ± sq ft of grand design—six expansive bedroom suites, seven luxe baths and a refined half bath. A two-car garage and private golf-cart bay complete this impeccably crafted retreat.



ground floor



second floor



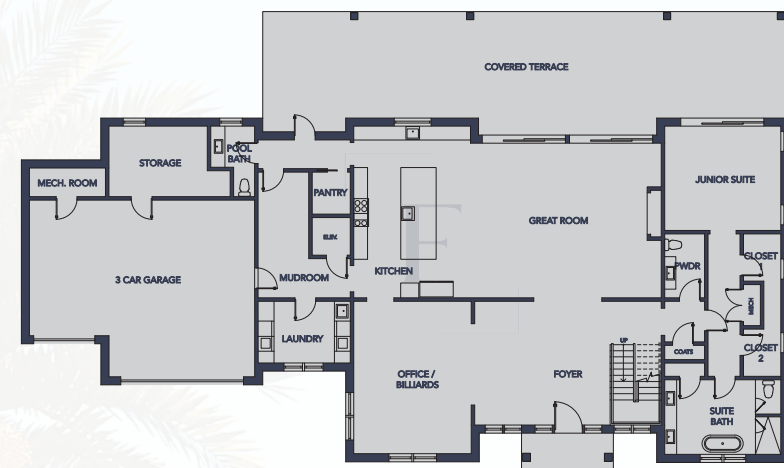
MODEL 9

8,000
square foot

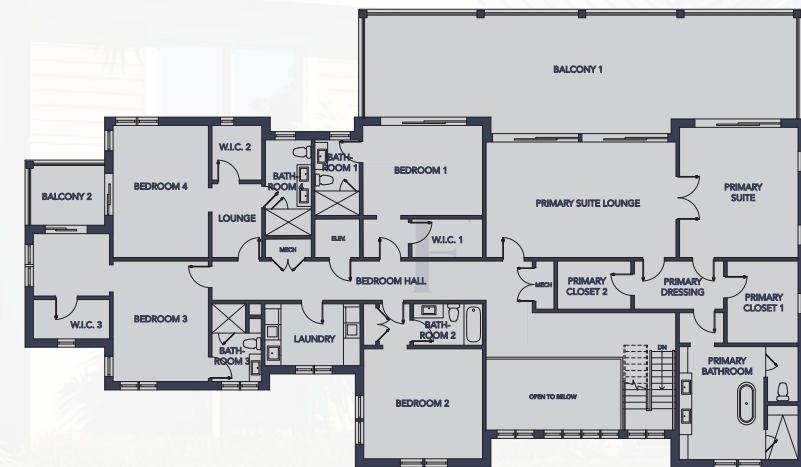
6
bedrooms

6
bathrooms

Model 9 spans 8,000 ± sq ft of bespoke elegance—six gracious bedroom sanctuaries, six serene en-suite baths, and two discreet powder rooms. A generous two-car garage and dedicated golf-cart port complete this masterwork, setting the benchmark for refined living in Wellington.



ground floor



second floor



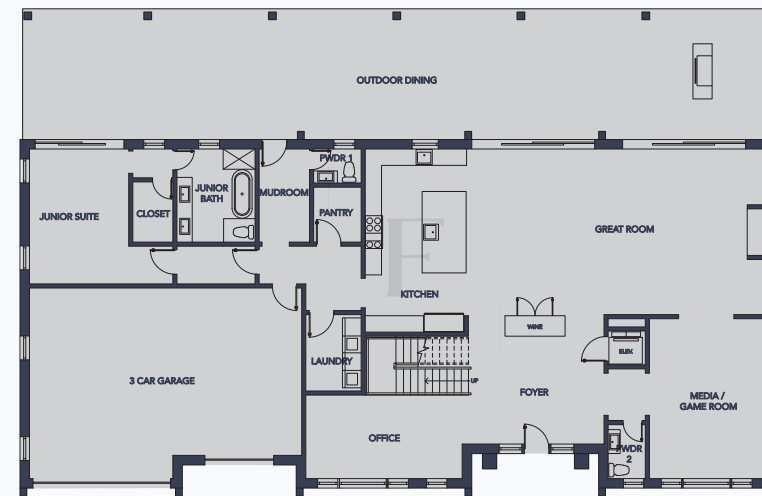
MODEL 10

5,900
square foot

7
bedrooms

8
bathrooms

Model 10 showcases 5,900 ± sq ft of precision-craftsmanship — seven refined bedroom suites, eight spa-inspired baths, and two graceful powder rooms. A generous three-car garage rounds out this thoughtfully designed retreat.



ground floor



second floor



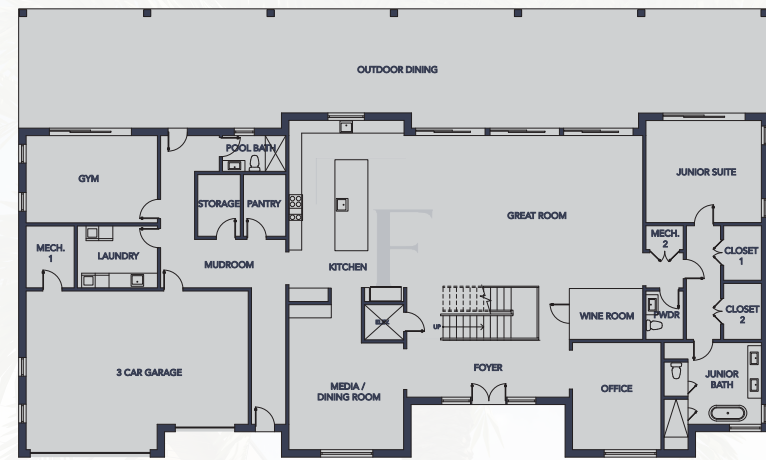
MODEL 11

8,900
square foot

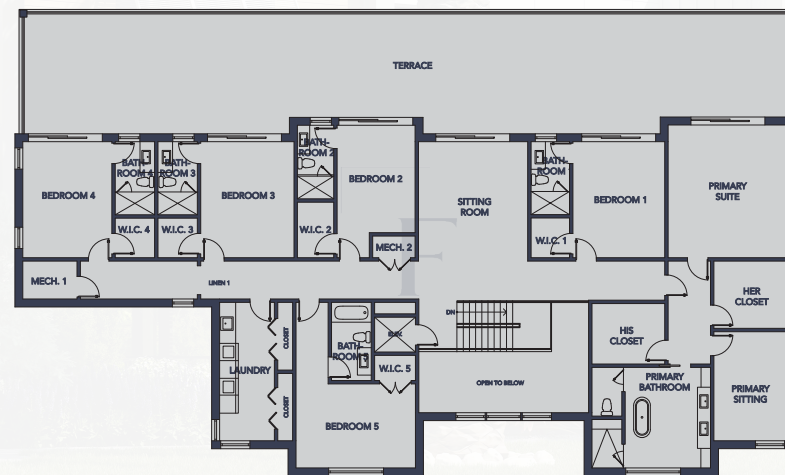
5
bedrooms

5
bathrooms

Model 11 exudes quiet grandeur—five sumptuous bedroom suites, five spa-level baths, and two refined powder rooms meet a generous three-car garage, all finished with Farrell’s signature craftsmanship for an ambiance of timeless sophistication.



ground floor



second floor



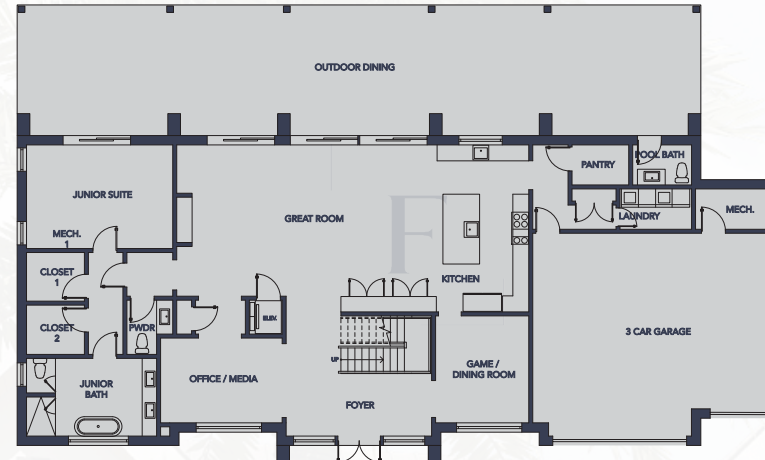
MODEL 12

6,800
square foot

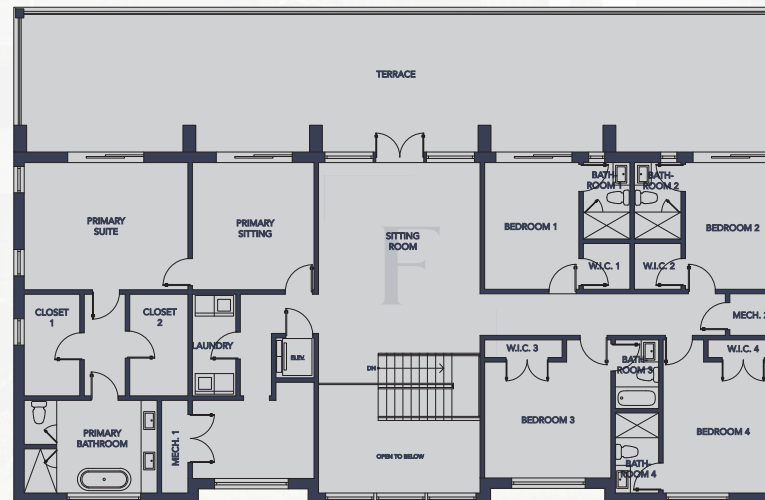
6
bedrooms

6
bathrooms

Model 12 unfolds 6,800 ± sq ft of effortless luxury—six lavish bedroom suites, six en-suite baths, and two refined powder rooms join a spacious three-car garage. Your pristine home is moments from fine dining, couture boutiques, and premier equestrian events.



ground floor



second floor



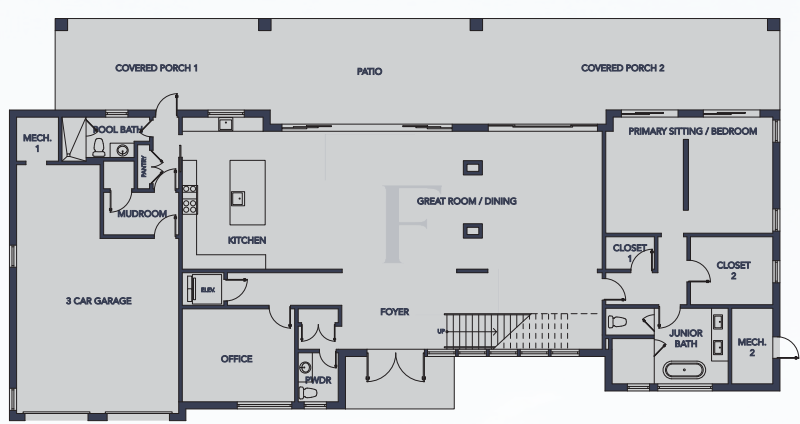
MODEL 13

5,700
square foot

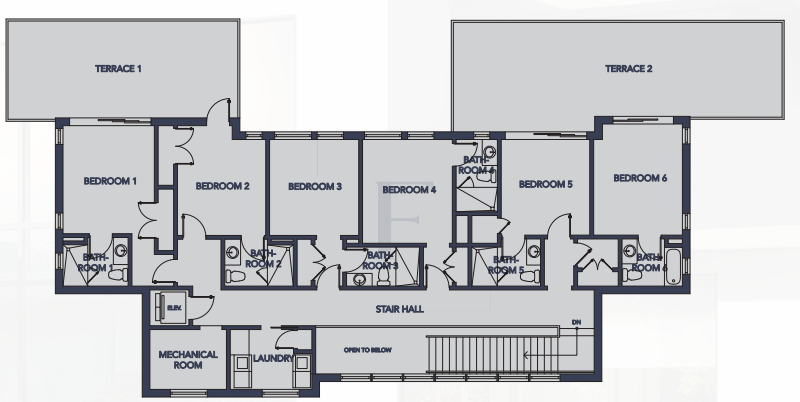
7
bedrooms

8
bathrooms

Model 13 offers 5,700 ± sq ft of polished grandeur—seven lavish bedroom suites and eight en-suite baths pair with a generous three-car garage. Sun-lit living areas and bespoke finishes foster seamless indoor-outdoor elegance.



ground floor



second floor



MODEL 14

7,700
square foot

9
bedrooms

10
bathrooms

Indulge in unmatched opulence in this majestic 7,700+ sqft haven, boasting 9 lavish bedrooms, 10 exquisite ensuite bathrooms, and spacious 2-car garage parking. Nestled within the prestigious Palm Beach Polo Club.



ground floor



second floor

FARRELL  ESTATES
WELLINGTON

LIFESTYLE



A LIFE OF *DISTINCTION* AWAITS AT FARRELL ESTATES WELLINGTON

Located within the exclusive Palm Beach Polo and Country Club, Farrell Estates Wellington offers more than just a home—it presents an unparalleled lifestyle. Here, in the heart of Wellington, you'll find a sanctuary where world-class polo, equestrian events, and an elite community converge.

UNRIVALED LOCATION

Nestled in one of Florida's most prestigious locales, Farrell Estates Wellington is a gateway to the best of Palm Beach County. Just minutes away, discover the pristine beaches of Palm Beach, where azure waters meet golden sands. For the golf enthusiast, the area is surrounded by some of the world's finest courses, offering the perfect backdrop for your leisure.

CONVENIENTLY CONNECTED

Your new home places you at the center of it all. A short drive takes you to the vibrant shopping and dining scenes of West Palm Beach, where luxury boutiques and gourmet restaurants await. For those seeking more, Jupiter's serene coastline is just an hour away, while the cultural and cosmopolitan allure of Miami is within a 90-minute drive.

THE ESSENCE OF WELLINGTON

A picturesque village west of West Palm Beach, is known for its charming community and equestrian lifestyle. As the fifth-largest municipality in Palm Beach County, it offers the perfect blend of tranquility and convenience, being just 66 miles north of Miami. As part of the Miami metropolitan area, Wellington provides easy access to urban amenities while maintaining its own unique, serene character.



THE FARRELL COMPANIES FOR A *LIFE WELL BUILT.*

For nearly three decades, The Farrell Companies has redefined luxury living in The Hamptons. Our hallmark of quality and vision has arrived in South Florida.

Our vertically integrated platform-spanning custom-built homes, luxury waterfront developments, commercial spaces, and more – delivers unmatched quality, timeless design, and unparalleled service.



Founded by Joe Farrell in 1995, our brand has grown from a single vision to a diversified real estate force with a thriving portfolio. We lead every aspect in-house—from design and construction to procurement—ensuring superior craftsmanship, meticulous cost control, and seamless delivery.

The Farrell Companies is more than a company; it's a family. Every client becomes part of our story, benefiting from the expertise gleaned across 400+ luxury homes and countless commercial projects. Our promise is simple: We build spaces that elevate the way you live and work, now and for generations to come.





FARRELL  ESTATES
WELLINGTON

The logo features a stylized white silhouette of a horse in profile, facing right, positioned between the words 'FARRELL' and 'ESTATES'. The word 'WELLINGTON' is written in a larger, bold, serif font below the other two words.

A Collection of 27 Signature Custom Homes

FarrellWellington.com